

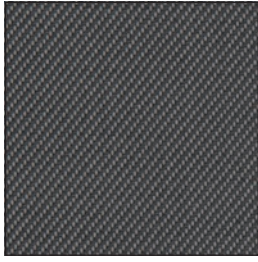
SCREEN COLOURS & SPECIFICATIONS

Fischer[®]

SCREEN COLOURS



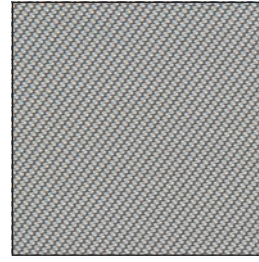
160021 Grey/Black



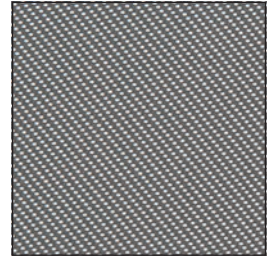
160022 Black/Grey



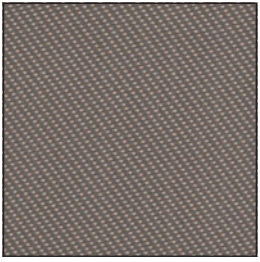
160023 Grey/Grey



160024 White/Grey



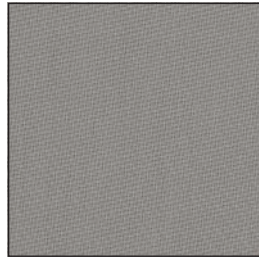
160025 Grey/White



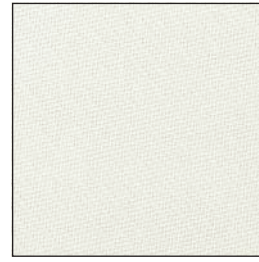
160026 Grey/Sand



160027 Sand/Grey



160028 Pearl Grey/Pearl Grey



160029 White/White



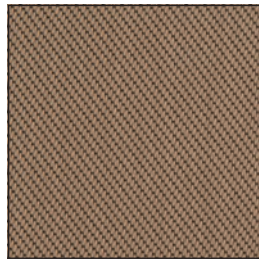
160030 Black/Black



160035 Bronze/Bronze



160036 Bronze/Sand



160037 Sand/Bronze



160040 Pure Black/Pure Black



160047 Anthracite Grey / Anthracite Grey

SCREEN SPECIFICATIONS

FISCHER ARTICLE	MATERIAL	WEIGHT G/M ²	WIDTH CM	OEKO-TEX	FR FLAME RETARDANT	OF OPEN-NESS FACTOR	TUV UV TRANSMISSION	TV LIGHT TRANSMISSION	FOR CALCULATION G-TOTAL (g _{tot})			G-TOTAL (g _{tot}) GLASS TYPE + EXTERIOR TEXTILE		
									RS SOLAR REFLECTION	TS SOLAR TRANSMISSION	AS SOLAR ABSORPTION	GLASS F: g=0,64 U=1,1	GLASS G: g=0,33 U=1,0	GLASS H: g=0,53 U=0,7
160021	42% fibreglass / 58% PVC	525	250	X	M1/B1/C	5%	3,4%	3,6%	12,6%	3,6%	83,8%	0,09	0,08	0,07
160022	42% fibreglass / 58% PVC	525	250	X	M1/B1/C	5%	3,4%	3,6%	9,9%	3,6%	86,5%	0,10	0,08	0,07
160023	42% fibreglass / 58% PVC	525	250	X	M1/B1/C	5%	3,5%	3,6%	15,1%	3,5%	81,4%	0,09	0,08	0,07
160024	42% fibreglass / 58% PVC	525	250	X	M1/B1/C	5%	5,5%	6,6%	37,2%	6,7%	56,1%	0,09	0,07	0,07
160025	42% fibreglass / 58% PVC	525	250	X	M1/B1/C	5%	5,5%	6,6%	26,9%	6,7%	66,4%	0,10	0,08	0,08
160026	42% fibreglass / 58% PVC	525	250	X	M1/B1/C	5%	3,9%	4,5%	21,5%	4,7%	73,8%	0,09	0,08	0,07
160027	42% fibreglass / 58% PVC	525	250	X	M1/B1/C	5%	3,9%	5,5%	26,5%	4,7%	68,8%	0,09	0,07	0,07
160028	42% fibreglass / 58% PVC	525	250	X	M1/B1/C	5%	6,0%	8,4%	38,3%	10,1%	51,6%	0,11	0,08	0,09
160029	42% fibreglass / 58% PVC	525	250	X	M1/B1/C	5%	4,3%	21,2%	65,9%	21,0%	13,1%	0,16	0,10	0,13
160030	42% fibreglass / 58% PVC	525	250	X	M1/B1/C	5%	3,6%	3,6%	5,0%	3,6%	91,4%	0,10	0,09	0,07
160035	42% fibreglass / 58% PVC	525	250	X	M1/B1/C	5%	3,8%	3,8%	8,1%	3,9%	88,0%	0,10	0,08	0,07
160036	42% fibreglass / 58% PVC	525	250	X	M1/B1/C	5%	4,0%	5,0%	21,1%	5,7%	73,2%	0,10	0,08	0,08
160037	42% fibreglass / 58% PVC	525	250	X	M1/B1/C	5%	4,0%	5,0%	28,0%	5,7%	66,3%	0,09	0,08	0,07
160040	42% fibreglass / 58% PVC	525	270	X	M1/B1/C	5%	5,9%	5,9%	5,9%	3,7%	90,4%	0,10	0,09	0,07
160047	42% fibreglass / 58% PVC	525	270	X	M1/B1/C	5%	6,1%	6,2%	6,7%	6,2%	87,1%	0,12	0,09	0,09

GLASS TYPE - REFERENCE GLASS ACCORDING TO DS/EN14501:2021

Glass F: 2-layer window. 4 mm float/16 mm argon/4 mm float with "low emission coating"

Glass G: 2-layer window. 6 mm float with "sun control coating"/16 mm argon/4 mm float

Glass H: 3-layer window. 4 mm float with "low emission coating"/12 mm argon/4 mm float/12 mm argon/4 mm float with "low emission coating"

The above calculations of G-total (g_{tot}) are made in accordance with EN 52022-1.

Note: Please be aware that the G-value used for calculating solar energy penetration relates to the properties of the glass itself and not the G-value for the entire window. It is always recommended to seek advice from one of our experienced advisors for an accurate calculation of G-values suited to the specific project.

Calculation of the shading factor: $F_c = G\text{-total (g}_{tot}) / g$

where g = the glass/pane's g-value.