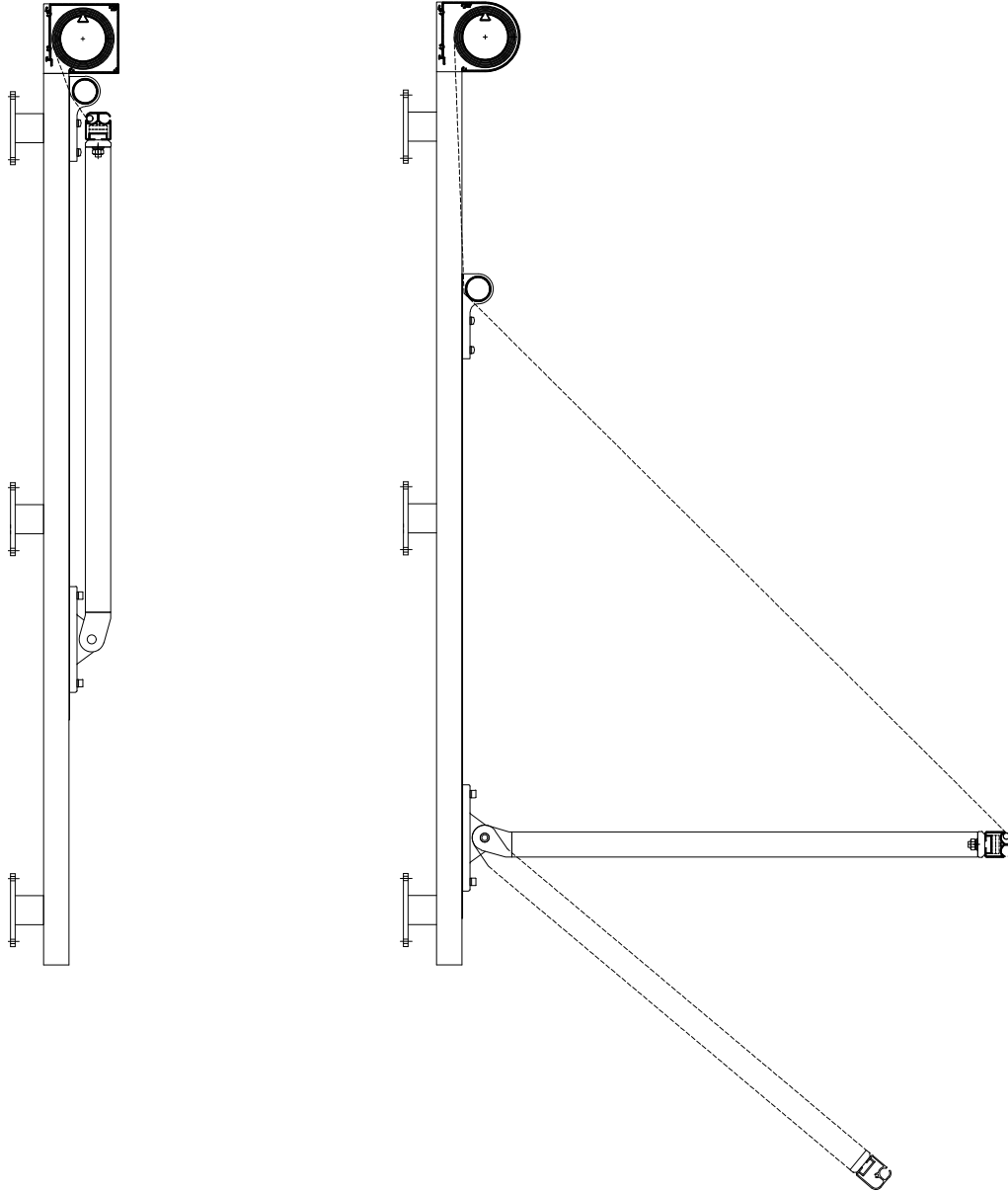


MARKISOLETTE SYSTEM 95



Fischer[®]

MARKISOLETTE SYSTEM 95



SPECIFICATIONS

| | |
|--------------------|---|
| CASSETTE | Extruded aluminium, square or D-shaped, 95 mm. |
| FRONT BAR | Extruded aluminium, 35 x 38 mm. |
| SIDE GUIDE | Extruded aluminium, 31 x 35 mm. Drop arms 22 x 33 mm, with built-in springs. Arm length always 70 cm. |
| SYSTEM COLOUR | Standard RAL 9010 or anodised. RAL special colour is available on request. |
| TEXTILE | 100% Scotchgard™ treated acrylic. Colour according to collection. |
| OPERATION | 230V motor. |
| MOUNTING | Wall-mounted or self-supporting. |
| GUIDING DIMENSIONS | Motor: Max. width 200 cm max. height 180 cm. The maximum width can be increased for motorised systems by linking multiple awnings in series. |