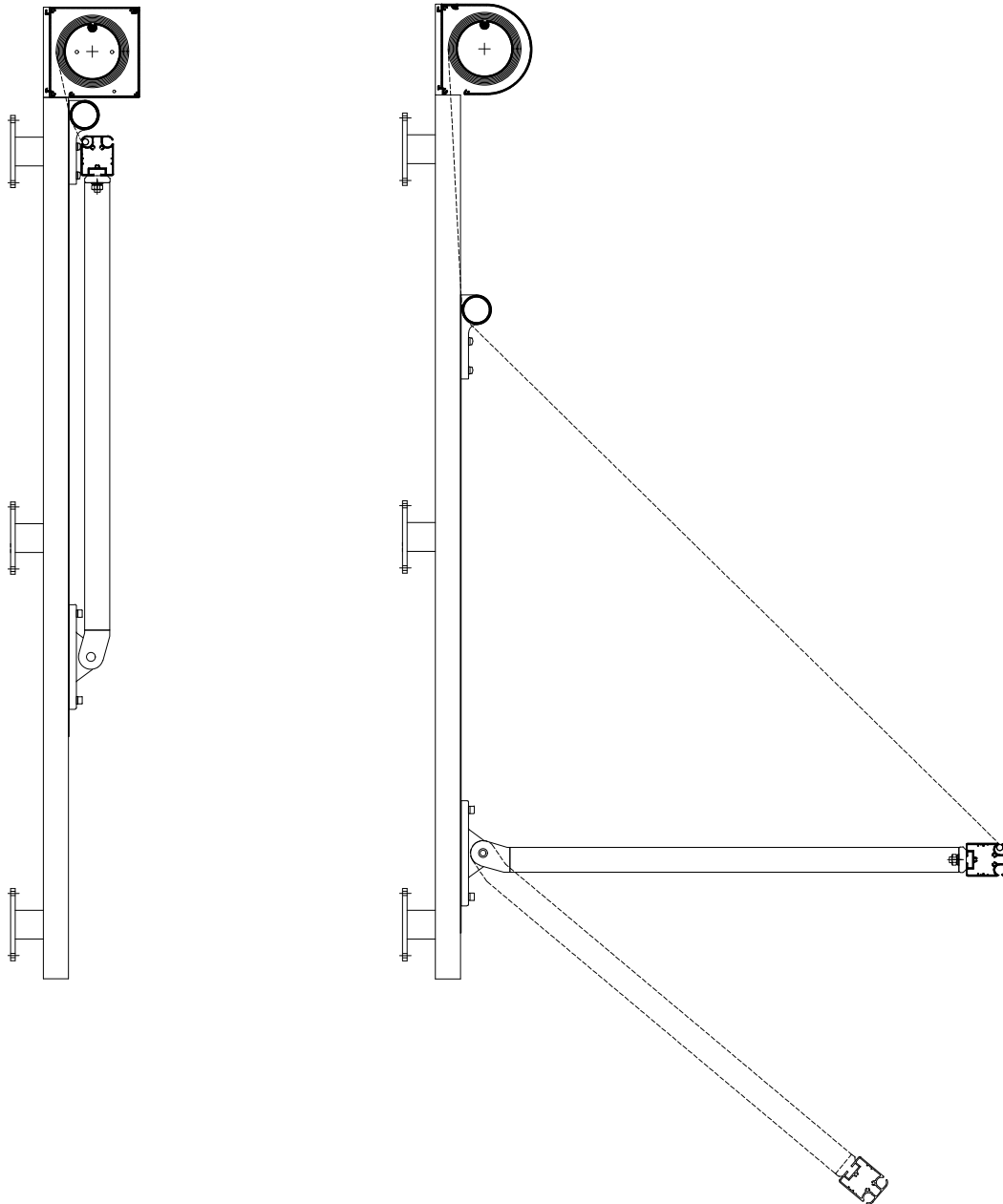


MARKISOLETTE SYSTEM 125



Fischer[®]

MARKISOLETTE SYSTEM 125



SPECIFICATIONS

CASSETTE	Extruded aluminium, square or D-shaped, 125 mm.
FRONT BAR	Extruded aluminium, 55 x 45 mm.
SIDE GUIDE	Extruded aluminium, 31 x 35 mm. Drop arms 22 x 33 mm, with built-in springs. Arm length always 70 cm.
SYSTEM COLOUR	Standard RAL 9010 or anodised. RAL special colour is available on request.
TEXTILE	100% Scotchgard™ treated acrylic. Colour according to collection.
OPERATION	230V motor.
MOUNTING	Wall-mounted or self-supporting.
GUIDING DIMENSIONS	Motor: Max. width 320 cm max. height 300 cm. The maximum width can be increased for motorised systems by linking multiple awnings in series.