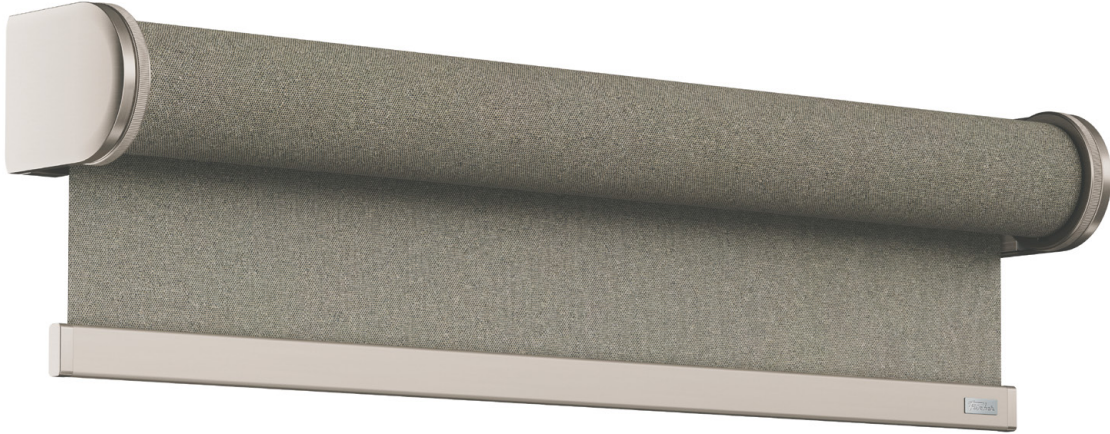


ROLLER BLIND CLASSIC

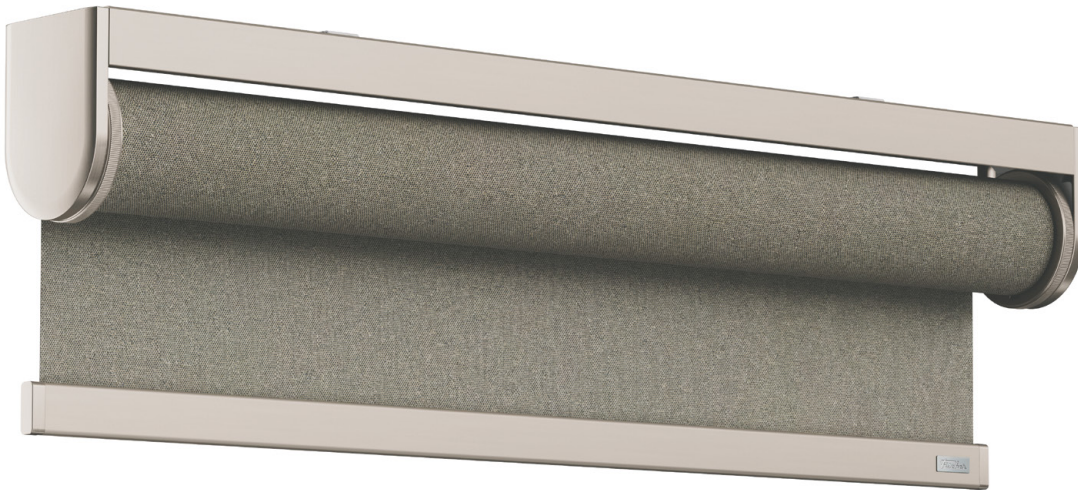


Fischer[®]

ROLLER BLIND CLASSIC



ROLLER BLIND WITH BRACKETS



ROLLER BLIND WITH MOUNTING RAIL



ROLLER BLIND WITH CASSETTE

ROLLER BLIND CLASSIC

ABOUT ROLLER BLIND CLASSIC

ROLLER BLIND CLASSIC is a concept designed with precision in every component. This streamlined, flexible, and intuitive system leaves no room for doubt regarding functionality, choices, and configuration options.

ROLLER BLIND CLASSIC is a durable and reliable system, crafted with attention to detail. This includes everything from the rail to the safety components and the increased number of colours that always match from brackets to bottom lists.

ROLLER BLIND CLASSIC blends sleek aesthetics, dependable functionality, and flexible design into one streamlined solution.

MODELS

Select from models featuring: Brackets - Mounting rail - Cassette

Models with brackets offer a minimalist choice, while the mounting rail provides functional design options. For those prioritising aesthetics, the cassette model with a hidden roll is ideal.

Each model comes in three sizes: Small, Medium, and Large, featuring tubes of 28 mm, 38 mm, and 50 mm respectively. These models can be mounted on either the ceiling or the wall. The maximum fabric widths are 1.8 meters, 3 meters, and 3.5 meters, correspondingly. Additionally, for models with brackets and mounting rail, vertical guidance with a cord can be integrated.

OPERATION

Select from the following four operational choices:



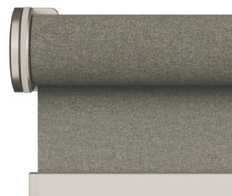
CHAIN

All three models feature chain operation, chain tensioning is required, and child safety devices come in two versions: a standard plastic version available in white, black, and transparent, and a design version in metal to match the system colours. All other operational types are child safe by design.



MOTOR

ROLLER BLIND CLASSIC features MotionBlinds battery motors as standard, offering seamless Smart Home integration and app control. A standout feature is the “pull control,” which removes the need for a remote, though a remote is still optional. Additionally, MotionBlinds battery motors come with motor covers that match the system colours. Alternatively, you may opt for Somfy battery motors; however, please note that they do not come with system-coloured motor covers.



SPRING

A flexible, efficient, and smooth operation of the roller blind with a spring pull: by simply pulling the blind down and raising it again with a gentle pull on the bottom list, it adjusts to the desired position.



TWIN PULL

Twin pull provides a safe, comfortable, and easy way to operate roller blinds without needing extra child safety measures. This intuitive system allows you to roll the blind up by pulling the front metal tassel and roll it down by pulling the rear tassel.

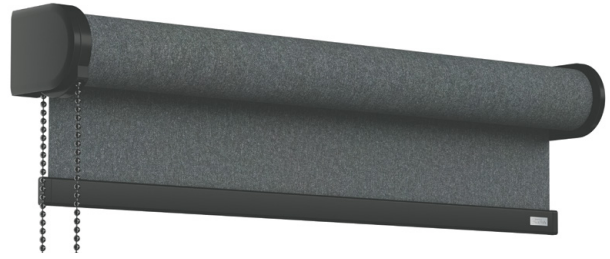
ROLLER BLIND CLASSIC

COLOUR VARIANTS

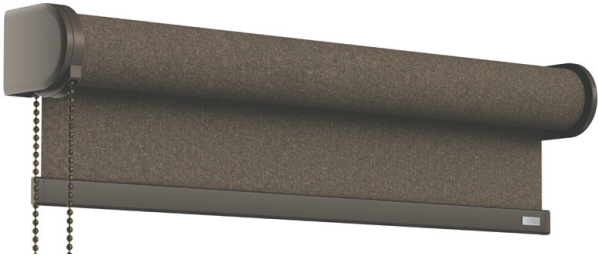
Select from six design colours for ROLLER BLIND CLASSIC: white, black, bronze, champagne, gun metal, or antique brass. Models with mounting rails and cassettes are offered in white, black, bronze, and champagne, while models with brackets are also available in gun metal and antique brass. For bracket and mounting rail models, white, black, and bronze feature more plastic components, whereas champagne, gun metal, and antique brass comprise metal materials.



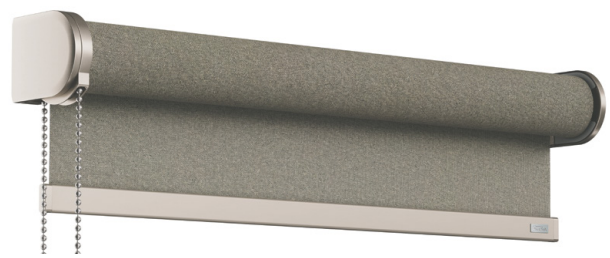
WHITE



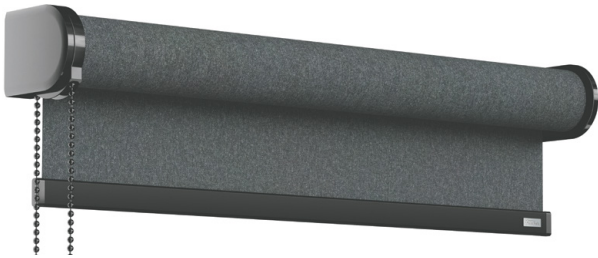
BLACK



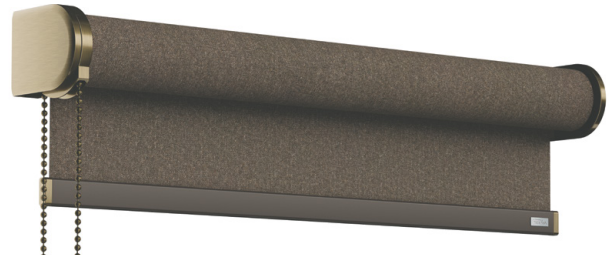
BRONZE



CHAMPAGNE



GUN METAL



ANTIQUE BRASS

MATERIALS

Tubes and profiles are made of aluminium. Brackets and chains are made of steel. Fabrics are composed of polyester, cotton, fiberglass, and PVC, with colours and materials matching the collection. Remaining components: metal alloy or plastic (in different types depending on the component).

BOTTOM LISTS

Choose between hidden or visible bottom list:

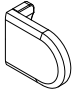
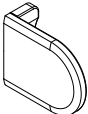
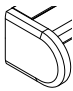
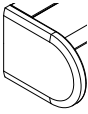
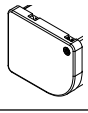
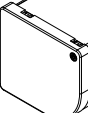
- Hidden bottom list (4 x 25 mm): a flat and sewn-in/welded-in aluminium list without end caps.
- Visible bottom list (8 x 20 mm): an external aluminium bottom list with a square design and metal end caps matching the system colours (white, black, bronze, champagne, gun metal, or antique brass).

OPTIONS

A range of variants can include vertical guidance with a cord that can be mounted on the wall or in a niche/frame. This option is available specifically with the visible bottom list.

ROLLER BLIND CLASSIC

SPECIFICATIONS

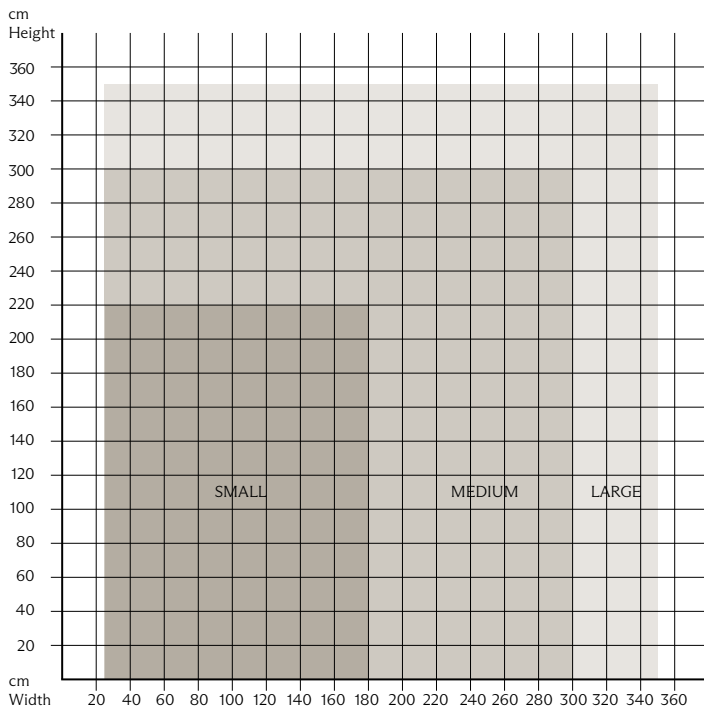
DIMENSION HEIGHT & DEPTH IN MM	SYSTEM SIZE	OPERATION	CONFIGURATION CODE	MINIMUM WIDTH IN CM	OPTIONS VERTICAL GUIDANCE	HARDWARE COLOURS	
ROLLER BLIND WITH BRACKETS							
 H: 43,5 mm D: 56 mm	Small 28mm tube Width: ≤ 1,8m*	Chain	S-10A	25	Cord	White	
		Spring	S-10C	70		Black	
	 H: 61,5 mm D: 78 mm	Medium 38mm tube Width: ≤ 3,0m*	Chain	M-10A	25	Cord	Black
			Motor	M-10B	63,5 / 60	Cord	Bronze
		Large 50mm tube Width: ≤ 3,5m*	Spring	M-10C	80		Champagne
			Twin Pull	M-10D	35	Cord	Antique Brass
Large 50mm tube Width: ≤ 3,5m*	Motor	L-10B	63,5 / 60	Cord	Gun Metal		
	Twin Pull	L-10D	35	Cord			
ROLLER BLIND WITH MOUNTING RAIL							
 H: 43,5 mm D: 56 mm	Small 28mm tube Width: ≤ 1,8m*	Chain	S-20A	25	Cord	White	
		Spring	S-20C	70		Black	
	 H: 61,5 mm D: 78 mm	Medium 38mm tube Width: ≤ 3,0m*	Chain	M-20A	25	Cord	Black
			Motor	M-20B	63,5 / 60	Cord	Bronze
		Large 50mm tube Width: ≤ 3,5m*	Spring	M-20C	80		Champagne
			Twin Pull	M-20D	35	Cord	
Large 50mm tube Width: ≤ 3,5m*	Chain	L-20A	25	Cord			
	Motor	L-20B	63,5 / 60	Cord			
Large 50mm tube Width: ≤ 3,5m*	Twin Pull	L-20D	35	Cord			
	ROLLER BLIND WITH CASSETTE						
 H: 54mm D: 67 mm	Small 28mm tube Width: ≤ 1,8m*	Chain	S-40A	25		White	
						Black	
	 H: 74,5 mm D: 85 mm	Medium 38mm tube Width: ≤ 3m*	Chain	M-40A	25		Black
			Motor	M-40B	63,5 / 60		Bronze
		Large 50mm tube Width: ≤ 3,5m*	Chain	L-40A	25		Champagne
			Motor	L-40B	63,5 / 60		

*Max. size according to textile weight. See table with system size.

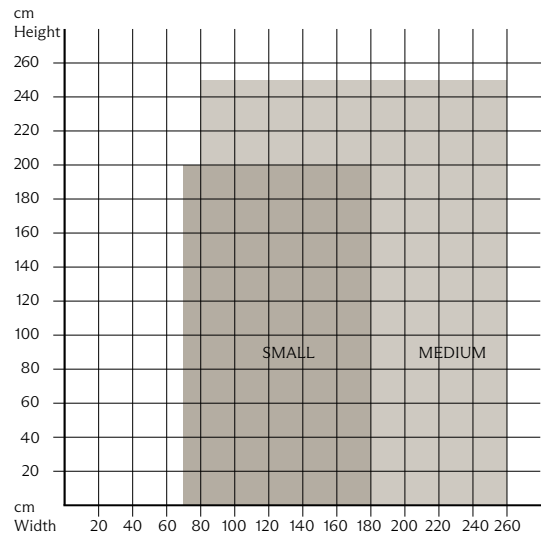
ROLLER BLIND CLASSIC

SYSTEM SIZE

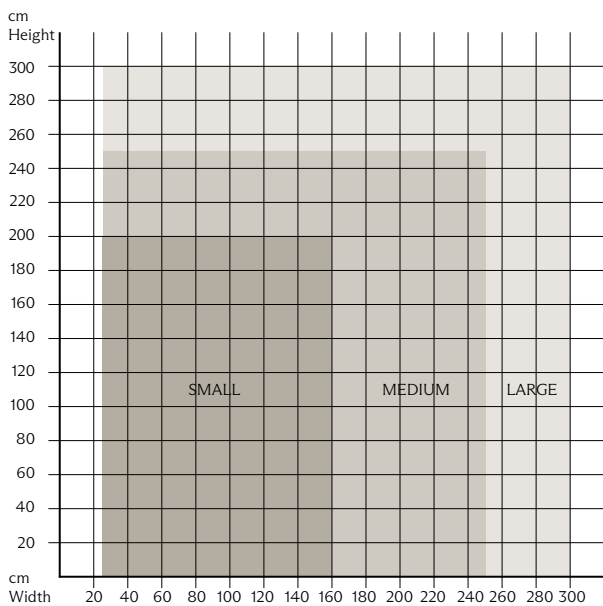
SYSTEM SIZE WITH FABRIC WEIGHT ≤ 250 G/SQM ROLLER BLIND WITH CHAIN, TWIN PULL, AND MOTOR (TWIN PULL AND MOTOR ONLY MEDIUM AND LARGE)



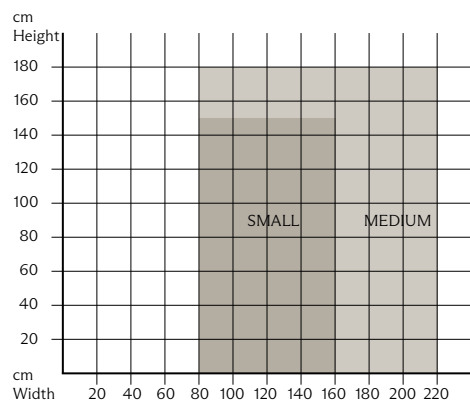
SYSTEM SIZE WITH FABRIC WEIGHT ≤ 250 G/SQM ROLLER BLIND WITH SPRING PULL



SYSTEM SIZE WITH FABRIC WEIGHT $\leq 250-330$ G/SQM ROLLER BLIND WITH CHAIN, TWIN PULL, AND MOTOR (TWIN PULL AND MOTOR ONLY MEDIUM AND LARGE)



SYSTEM SIZE WITH FABRIC WEIGHT $\leq 250-330$ G/SQM ROLLER BLIND WITH SPRING PULL



Large roller blind with cassette: limited height when using blackout and other heavy fabrics.