

# CURTAINS



*Fischer*<sup>®</sup>

## ABOUT FISCHER CURTAINS

Fischer offers a wide collection of curtains for private homes, public buildings, and larger commercial spaces.

The collection includes fabrics made of polyester with fire-retardant properties, fabrics in recycled polyester, and fabrics made from sustainable natural materials in various qualities.

Choose from an array of styles, including light and sheer curtains, dense sound-absorbing options, blackout designs, and unique hand-printed fabrics. Fischer's fabrics are available for purchase by the meter or as ready-made solutions, with five distinct curtain models to select from.

## FABRIC QUALITIES

Fischer's curtain collection features two distinct categories: one includes polyester fabrics with flame-retardant properties, while the other comprises natural materials like linen and cotton/linen blends, alongside fabrics crafted from recycled polyester.

### DIMOUT/BLACKOUT CURTAINS

For those seeking blackout options, we provide a range of dimout and blackout curtains. Our selection includes the Alda blackout curtain, along with the Antonia and Alberta dimout curtains, which partially darken the room.

### SOUND-ABSORBING CURTAINS

The Bertina curtain, crafted from recycled wool and polyamide, comes in various colour options. This elegant wool curtain not only enhances the room with a warm glow but also improves acoustics. Alternatively, the Ines velvet curtain, made of polyester, offers sound absorption while adding a soft, luxurious, and aesthetic touch to any space.

### LIGHT CURTAINS

We offer light fabric curtains made from recycled polyester, available in five distinct qualities, densities, and styles, along with a wide array of colours.

For instance, we provide two distinct qualities of recycled Trevira polyester. When stonewashed, these offer a charming, matte, and relaxed look. Unlike natural materials, which are easily influenced by moisture and temperature changes, a polyester curtain remains resistant to shrinking and creasing.

### CURTAINS CRAFTED FROM NATURE'S FINEST MATERIALS

The collection also features a dense sand washed linen and a lighter, transparent linen. Both fabrics are ideal for extra-long curtains, offering a natural and flowing look that gracefully touches the floor.

You can also choose curtains made from 100% recycled linen or recycled cotton and tightly woven linen, offering privacy with a cosy and relaxed ambiance.

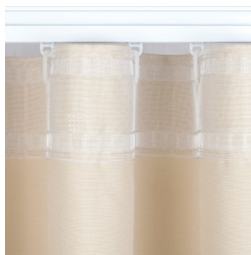
### HAND-PRINTED CURTAINS

We provide unique hand-printed fabrics that blend timeless elegance with contemporary style. Our patterns are crafted with a creative and playful flair, spanning from romantic expressions to bold graphic designs.



# CURTAINS

## MODEL OVERVIEW



### WAVE

Transparent wave tape, always used with gliders on a cord to achieve smooth folds. Wave tape provides a simple and sleek look with a smooth band at the top, ensuring the curtain always drapes in the same, soft folds.

Recommended fabric: Finished width x 2 (+ 12 cm seam allowance).  
Used with: Curtain profile 825, 1510, 2218, and 2020, as well as gliders on a cord, 8 cm.



### MULTI-POCKET

The white multi-pocket is a pleat tape designed to form numerous small pleats at the top of the curtain. The hook can be positioned as desired, thanks to multiple height-adjustable pockets. The fabric height is determined by the hook's position at the top of the tape, while the tape's height ensures stability, preventing the curtain from sagging between pleats.

Recommended fabric: Finished width x 2 (+ 12 cm seam allowance).  
Used with: Curtain profile 825, 1510, 2218, and 2020.



### WIDE RUFFLE TAPE

A ruffle tape creates elegant folds in the curtain, thanks to the small pleats within the tape band. The height of the band ensures stability, preventing the curtain from sagging between pleats.

Recommended fabric: Finished width x 2 (+ 12 cm seam allowance).  
Used with: Curtain profile 825, 1510, 2218, and 2020.



### RINGS

Metal rings on the curtain enable the fabric to glide smoothly and elegantly along the rod. With an internal diameter of 40 mm, these rings are ideal for use with the 2525 curtain profile, which has a diameter of 25 mm. The distance from the curtain to the top of the rod is 25 mm.

Recommended fabric: Finished width x 2 (+ 12 cm seam allowance).  
Used with: Round decorative curtain profile 2525.

# CURTAINS

## MODEL OVERVIEW



### TAPE WITH SEWN-IN GLIDERS

This transparent polyester tape features sewn-in, fixed gliders designed for mounting curtains on rails. The gliders are directly stitched onto the tape and can be easily inserted from the end of the profile during installation.

Recommended fabric: Finished width x 1.5 (+ 12 cm seam allowance).  
Used only with curtain profile 825.



### WIDE RUFFLE TAPE WITH HOOKS

White ruffle tape with pockets designed for 2-prong hooks.

Recommended fabric: Finished width x 1.3 (+ 12 cm seam allowance).



### BOTTOM HEM ON HEAVY CURTAINS

Curtains are sewn with invisible seams. Delivered with a 7 cm fold at the bottom.



### BOTTOM HEM ON LIGHT CURTAINS

Curtains are sewn with invisible seams. The bottom is delivered with a weighted band.

## PROFILE 825, 1510 & 2218



PROFILE 825



PROFILE 1510



PROFILE 2218

## CURTAIN ROD 2020



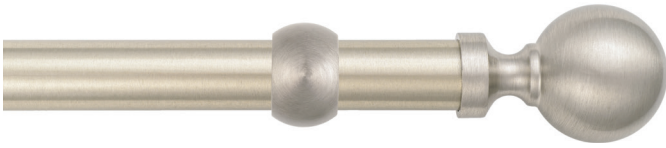
CURTAIN ROD 2020 COLOUR MATT FLAT BRASS (36)



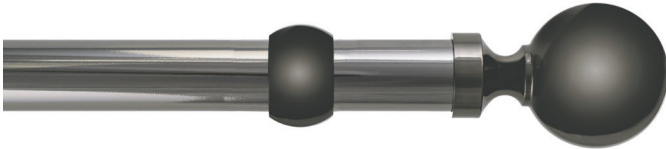
CURTAIN ROD 2020 COLOUR SCRATCHED BRONZE BRASS (39)



## CURTAIN ROD 2525



CURTAIN ROD 2525 COLOUR NICKEL MATT BRASS (02)



CURTAIN ROD 2525 COLOUR BLACK NICKEL BRASS (22)



CURTAIN ROD 2525 COLOUR MATT FLAT BRASS (36)



CURTAIN ROD 2525 COLOUR SCRATCHED BRONZE BRASS (39)

